

### “D” Wire (Kanthal Wire or Equivalent)

**Composition:** 22% Chromium, 4.8% Aluminum, Fe balance  
**Specific Resistance:** 812 Ohms / circ. mil foot @ 68°F / 20°C  
**Maximum continuous operating temperature:** 2370°F / 1300°C  
 (element temperature in air)

**Melting Point:** 1500°C / 2730°F  
**Density:** (lbs/in<sup>3</sup>): 0.262  
**Resistance Tolerance:** 17 ga. through 23 ga. ±3%, 24 ga. through 36 ga. ±5%, 37 ga. ±8%



**Note:** To obtain the working temperature resistance, multiply the factor by the room temperature resistance.

<b>Temp. °F</b>	68	212	392	752	1112	1292	1472	1652	1832	2012	2192
<b>Temp. °C</b>	20	100	200	400	600	700	800	900	1000	1100	1200
<b>Factor</b>	1.00	1.00	1.01	1.02	1.04	1.05	1.06	1.07	1.07	1.07	1.08

(These figures are given as a basis for engineering calculations and represent average material as supplied.)

Part Number	Gauge	Diameter	Resistance at 68°F/20°C ohms/ft.	Weight lb./1000 ft.	Length ft./lb.	Nominal Spool Weight	Standard Spool Size Code
RES-106-101	17	0.0450	0.396	5.07	197.2	10	D
RES-106-142	18	0.0400	0.500	4.01	249.4	10	D
RES-106-102	19	0.0360	0.630	3.18	314.5	5	C
RES-106-143	20	0.0320	0.793	2.53	395.3	1.75	C
RES-106-107	21	0.0285	1.00	2.01	497.5	8	D
RES-106-141	22	0.0253	1.27	1.58	632.9	6	C
RES-106-106	23	0.0226	1.59	1.26	793.7	35	—
RES-106-137	24	0.0201	2.01	1	1000	5	C
RES-106-109	25	0.0179	2.53	0.791	1264	5.5	C
RES-106-135	26	0.0159	3.21	0.624	1603	6	C
RES-106-136	27	0.0142	4.03	0.498	2008	5	C
RES-106-110	28	0.0126	5.11	0.392	2551	5	C
RES-106-103	29	0.0113	6.36	0.315	3175	4.25	C
RES-106-138	30	0.0100	8.12	0.247	4049	1.5	B
RES-106-111	31	0.0089	10.3	0.196	5102	1.5	B
RES-106-139	32	0.0080	12.7	0.158	6329	1.5	B
RES-106-105	33	0.0071	16.1	0.124	8065	4	C
RES-106-104	34	0.0063	20.5	0.098	10,204	5	C
RES-106-140	35	0.0056	25.9	0.0774	12,920	5	C
RES-106-112	37	0.0045	40.1	0.05	20,000	2	B

### Ordering Information

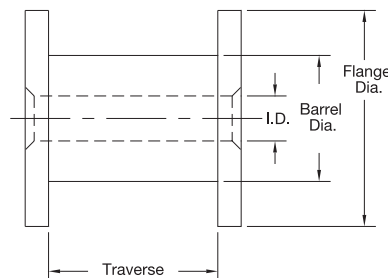
1. Specify the part number and quantity in lbs.
2. Only full spools are available; re-spooling of smaller quantities is not available.
3. Tempco reserves the right to change spool sizes as required.
4. Tempco reserves the right to ship ±10% of the stated spool weight.

*All Items Available from Stock*



### Standard Spool Dimensions

Spool Code	Flange		Barrel		Traverse		Bore ID	
	in	mm	in	mm	in	mm	in	mm
A	2.5	63	1.75	44	3	76	.62	16
B	3	76	1.75	44	3	77	.62	16
C	5	127	3	76	3.5	89	.62	16
D	6	152	3.5	89	3.5	89	.62	16
E	3.15	80	2	51	2.5	63	.62	16
F	3.87	98	2.37	59	3.12	79	.62	16
G	4.92	125	3.1	79	3.93	100	.62	16



**⚠ WARNING:** Cancer and Reproductive Harm - [www.P65Warnings.ca.gov](http://www.P65Warnings.ca.gov).

**(800) 323-6859 • Email: [sales@tempco.com](mailto:sales@tempco.com)**