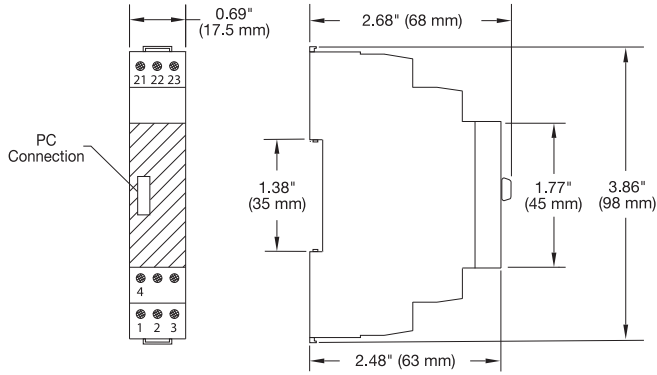
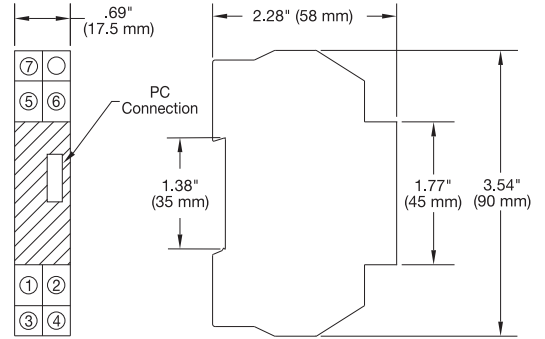


Wiring Diagrams for 2-Wire DIN Rail Mount Temperature/Process Transmitters

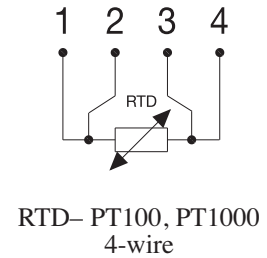
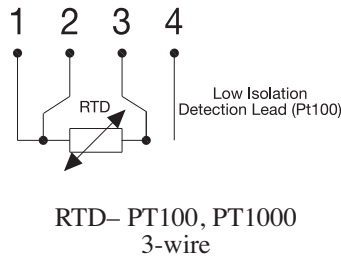
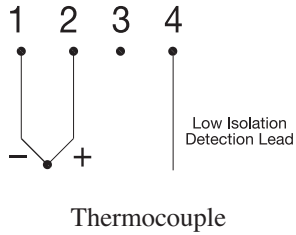
ETR1 Non-Isolated



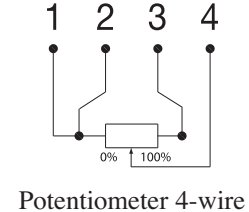
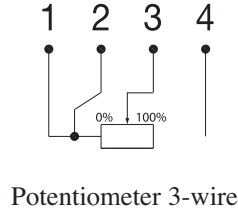
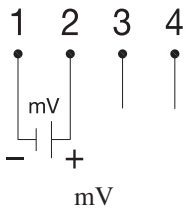
ETR2 Isolated and ETR3 Isolated High Precision



Input Connections for ETR1, ETR2 and ETR3



Additional Input Connections for Isolated ETR2 and ETR3



Output Connections for ETR1, ETR2 and ETR3

