

Terminations

Armor Cable Terminations: Type R1, Type R2 & Type R3

Available on any clamping or construction variation. Armor cable provides far superior protection to lead wires where abrasion is a constant problem. The standard leads are 10" of armor cable over 12" of flexible leads.

If longer leads are required, specify when ordering.

Duraband® Type R1 – Straight Armor Cable

Type R1A – Galvanized armor cable crimped in place for heaters under 2-1/2" I.D. and/or under 1-1/4" width.

Type R1AT – Galvanized armor cable attached with a threaded fitting for heaters over/equal 2-1/2" I.D. and over/equal 1-1/4" width.

Type R1B – Stainless Steel armor cable crimped in place for heaters under 2-1/2" I.D. and/or under 1-1/4" width.

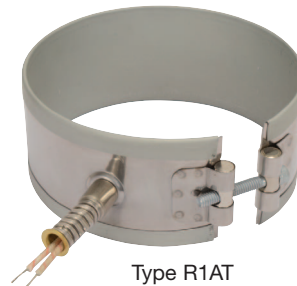
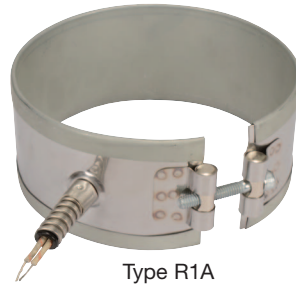
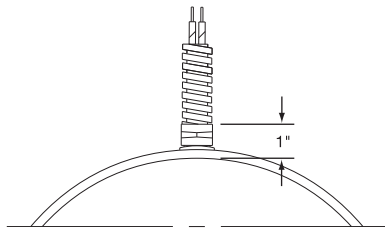
Type R1BT – Stainless Steel armor cable attached with a threaded fitting for heaters over/equal 2-1/2" I.D. and over/equal 1-1/4" width.

Type R1C – Galvanized armor cable, tack welded

Type R1D – SS armor cable, tack welded

Type R1E – Galvanized armor cable, full silver brazing

Type R1F – SS armor cable, full silver brazing



One-Piece Band

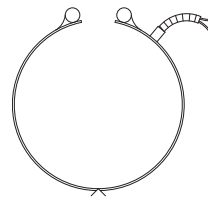
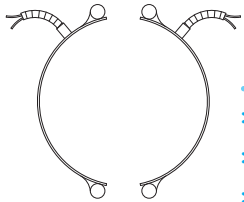
Standard Termination Location:
next to gap; center of width

- * **Minimum Inside Diameter:** 1-1/2" (38.1 mm)
- * **Minimum Width:** 1" (25.4 mm)
- * **Maximum Volts:** 480VAC
- * **Maximum Amps:** 12.5A

Two-Piece Band

Standard Termination Location:
next to same gap on each half;
center of width

- * **Minimum Inside Diameter:** 2" (50.8 mm)
- * **Minimum Width:** 1" (25.4 mm)
- * **Maximum Volts/Amps:** 480VAC/12.5A each half



One-Piece Expandable Band

Standard Termination Location:
next to gap; center of width

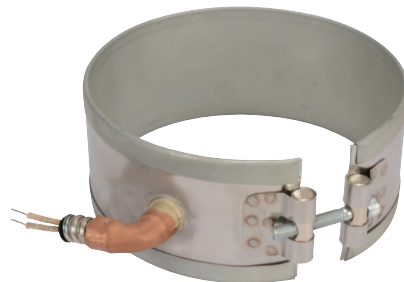
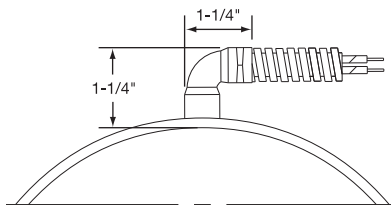
- * **Minimum Inside Diameter:** 2-1/2" (65.3 mm)
- * **Minimum Width:** 1-1/4" (31.8 mm)
- * **Maximum Volts/Amps:** 480VAC/12.5A

Duraband Type R2 – Right-Angle Armor Cable

Type R2A – Galvanized armor cable, crimped

Type R2B – SS armor cable, crimped

Type R2C – Plain leads, no cable



One-Piece Band

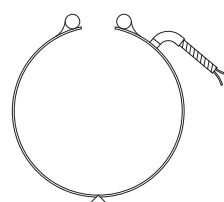
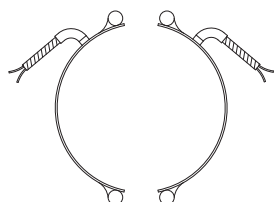
Standard Termination Location:
next to gap; center of width

- * **Minimum Inside Diameter:** 1-1/2" (38.1 mm)
- * **Minimum Width:** 1-1/4" (31.8 mm)
- * **Maximum Volts:** 480VAC
- * **Maximum Amps:** 12.5A

Two-Piece Band

Standard Termination Location:
next to same gap on each half;
center of width

- * **Minimum Inside Diameter:** 2" (50.8 mm)
- * **Minimum Width:** 1-1/4" (31.8 mm)
- * **Maximum Volts/Amps:** 480VAC/12.5A each half



One-Piece Expandable Band

Standard Termination Location:
next to gap; center of width

- * **Minimum Inside Diameter:** 2-1/2" (63.5 mm)
- * **Minimum Width:** 1-1/4" (31.8 mm)
- * **Maximum Volts/Amps:** 480VAC/12.5A